

# ROAD INDEX

- M.V. = MIDDLEFIELD VILLAGE
- A ADAMS RD. D6 I
  - J JOHNSON ST. (M.V.) B4
  - R RIDGEWOOD DR. (M.V.) B4
  - S SHEDD RD. A7-E7
  - S. STATE AVE. (M.V.) B4-B5
  - SPERRY LN. (M.V.) B4
  - SPRINGDALE AVE. (M.V.) B4
  - STANDISH AVE. (M.V.) B4
  - STATION RD. A1-A2
  - SWINE CREEK RD. C6-F7
  - K KENWOOD ST. (M.V.) B5
  - KINSMAN RD. A4-F4
  - L LAKE AVE. (M.V.) B4-B5
  - LAKEVIEW DRIVE (M.V.) B4
  - LINDA AVE. (M.V.) B4
  - M MADISON RD. D1-C7
  - MAPLE AVE. (M.V.) B4
  - MEADOW VIEW PL. A4-B4
  - MILL ST. (M.V.) B4
  - N NANTUCKET DR. (M.V.) B4
  - NAUVOO RD. B3-F3
  - NEWCOMB RD. B5-B7
  - N. STATE AVE. (M.V.) B4
  - NORTH VIEW DR. (M.V.) B4
  - O OAKDALE (M.V.) B4
  - OLD STATE RD. A1-D7
  - P PETERS RD. D2-F2
  - PIERCE ST. (M.V.) B4
  - W. HIGH ST. (M.V.) B4
  - X
  - Y
  - Z

- 1 CARDINAL JUNIOR HIGH SCHOOL
- 2 MIDDLEFIELD ELEMENTARY SCHOOL
- 3 CARDINAL HIGH SCHOOL
- 4 AMISH SCHOOL
- 5 AMISH SCHOOL
- 6 AMISH SCHOOL
- 7 AMISH SCHOOL
- 8 THE FIRST METHODIST CHURCH
- 9 WESLEYAN METHODIST CHURCH
- 10 MENNONITE CHURCH
- 11 ST. LUCY'S CATHOLIC CHURCH
- 12 HAYES CORNERS CEMETERY
- 13 MIDDLEFIELD CEMETERY
- 14 UNITED STATES POST OFFICE
- 15 MIDDLEFIELD VOL. FIRE DEPT.
- 16 MIDDLEFIELD MUNICIPAL CENTER
- 17 MIDDLEFIELD PUBLIC LIBRARY
- 18 BETHESDA NURSING HOME
- 19 MIDDLEFIELD TOWN HALL

## MIDDLEFIELD TOWNSHIP

SCALE: 1"=2000'  
 ROBERT L. PHILLIPS,  
 GEORGIA COUNTY ENGINEER

- UNPAVED ROADS
- PAVED ROADS
- RAILROAD
- TOWNSHIP LINE
- COUNTY LINE
- VILLAGE LINE

TRW-REDI  
 SCALE IN 1/10 OF AN INCH



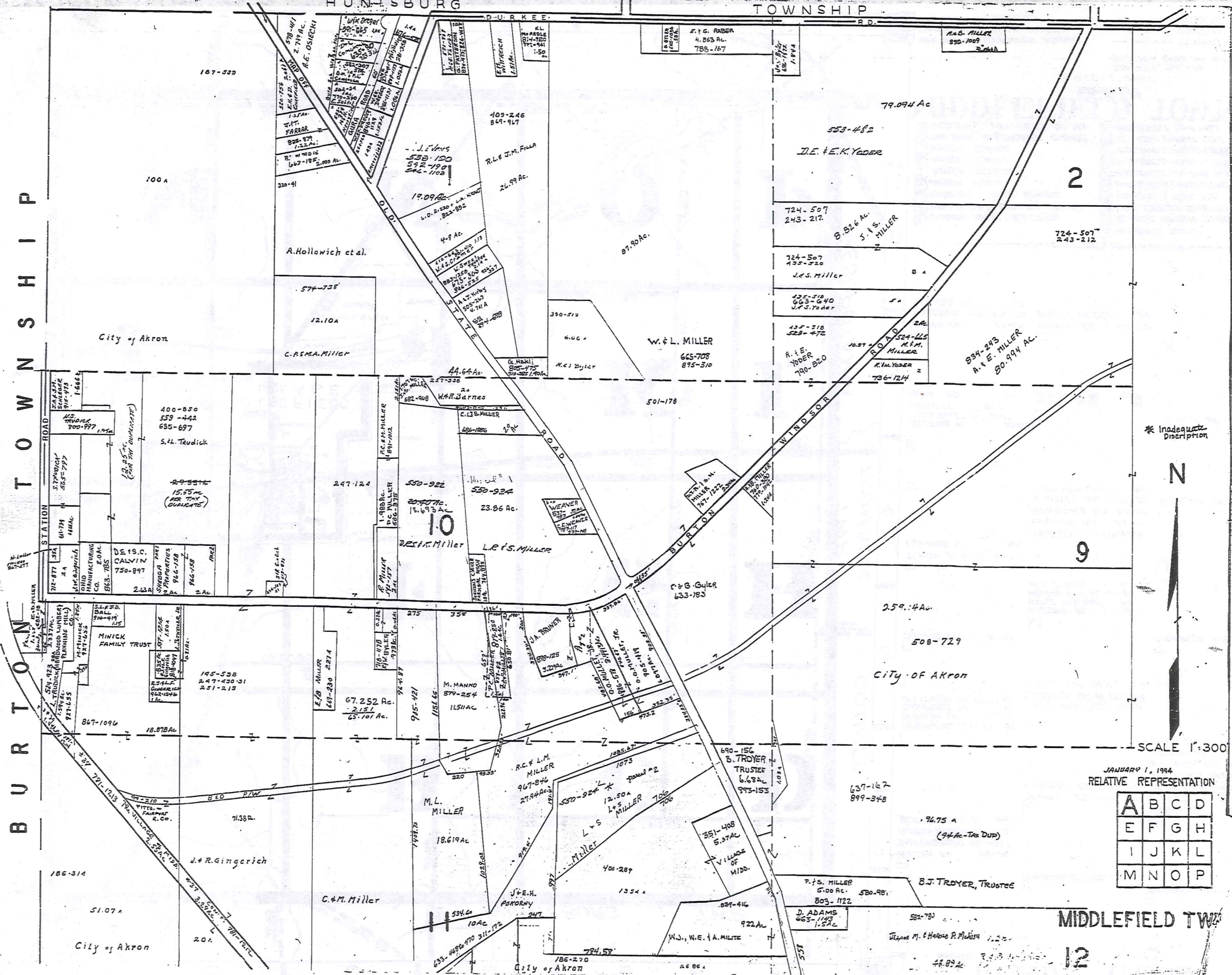
1-800-345-7334



BURTON TOWNSHIP

HUNTSBURG TOWNSHIP

278



TRW/REDI SCALE IN 1/10 OF AN INCH

1-800-345-7334

\* Inadequate Description

N

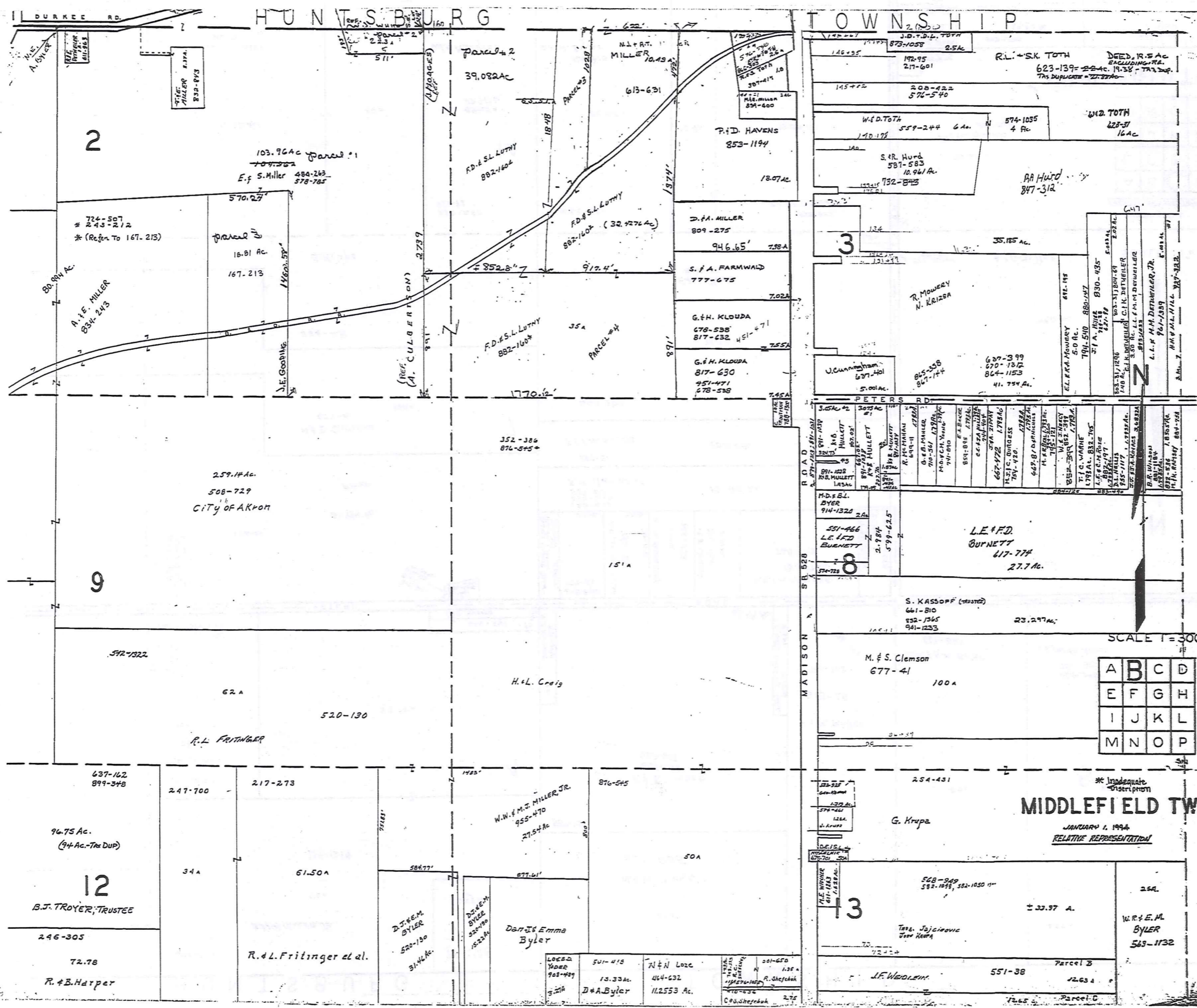
SCALE 1"=300'

JANUARY 1, 1994  
RELATIVE REPRESENTATION

A	B	C	D
E	F	G	H
I	J	K	L
M	N	O	P

MIDDLEFIELD TWP

12

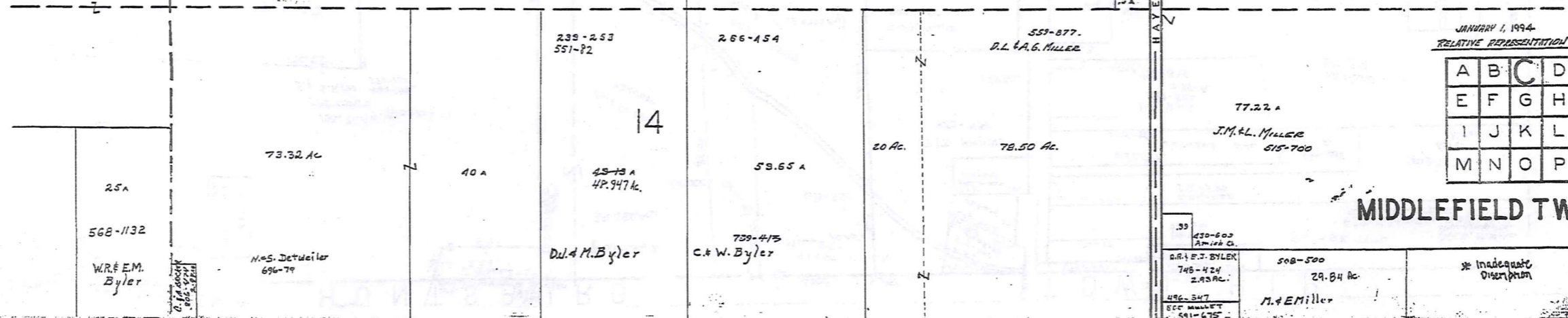
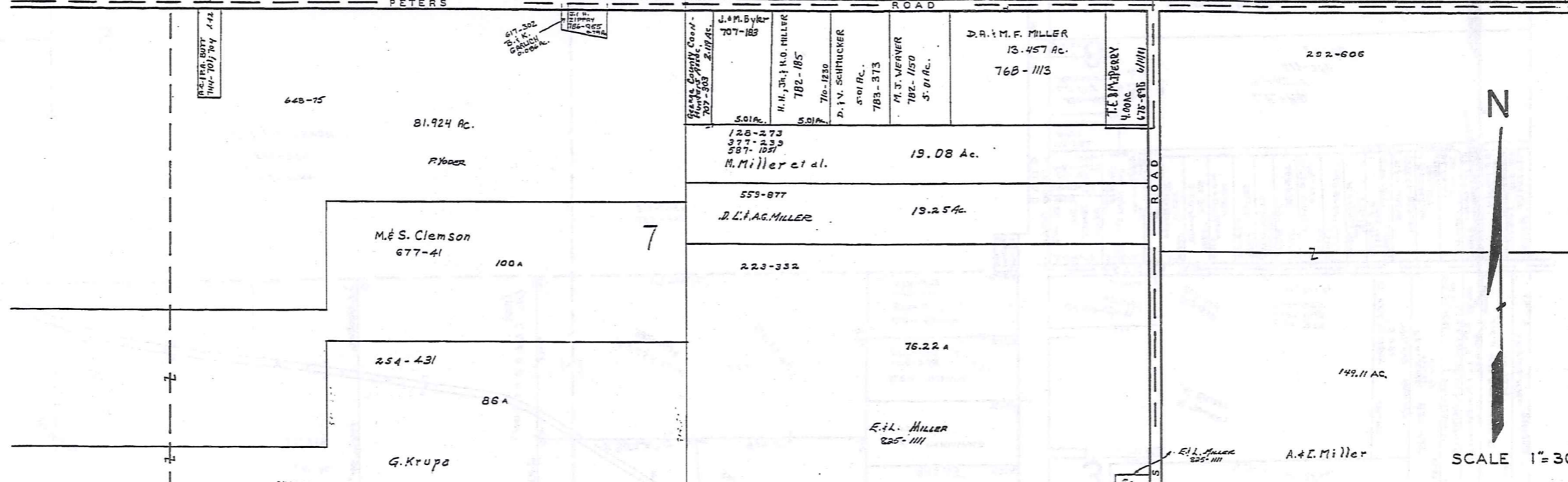
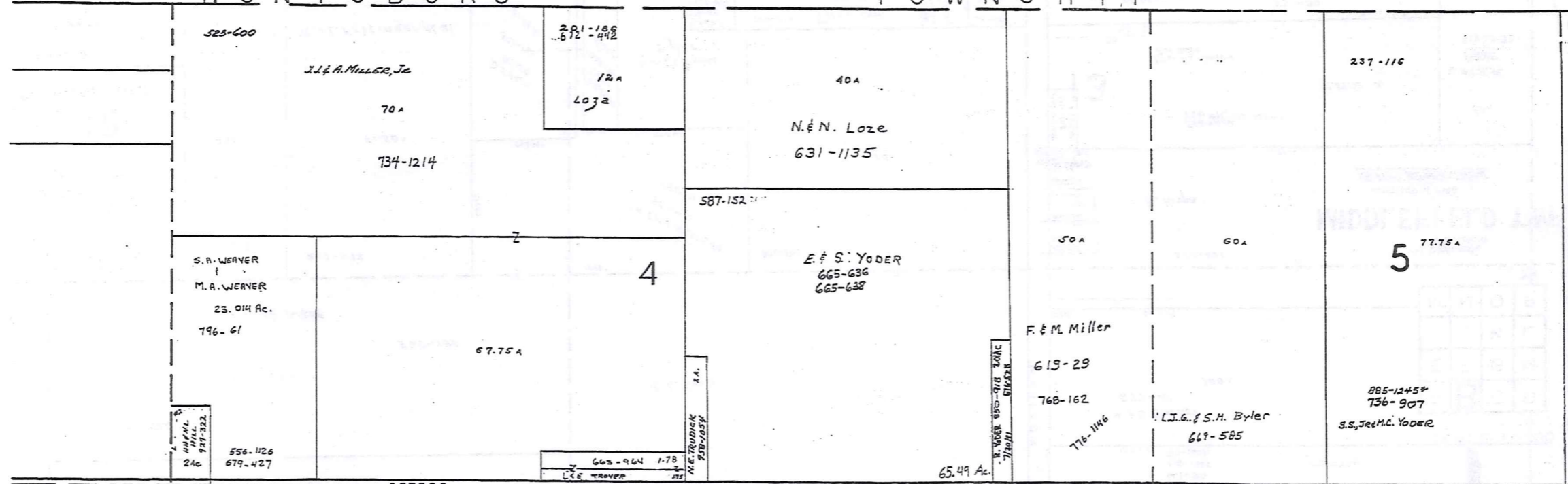


**TWP-REDI**  
 SCALE IN 1/10 OF AN INCH  
 1-800-345-7334

SCALE 1" = 300'

A	B	C	D
E	F	G	H
I	J	K	L
M	N	O	P

\* Inadequate  
 description  
**MIDDLEFIELD TWP.**  
 JANUARY 1, 1994  
 RELATIVE REPRESENTATION



TRW-REDI  
SCALE IN 1/10 OF AN INCH  
1-800-345-7334



SCALE 1"=300'

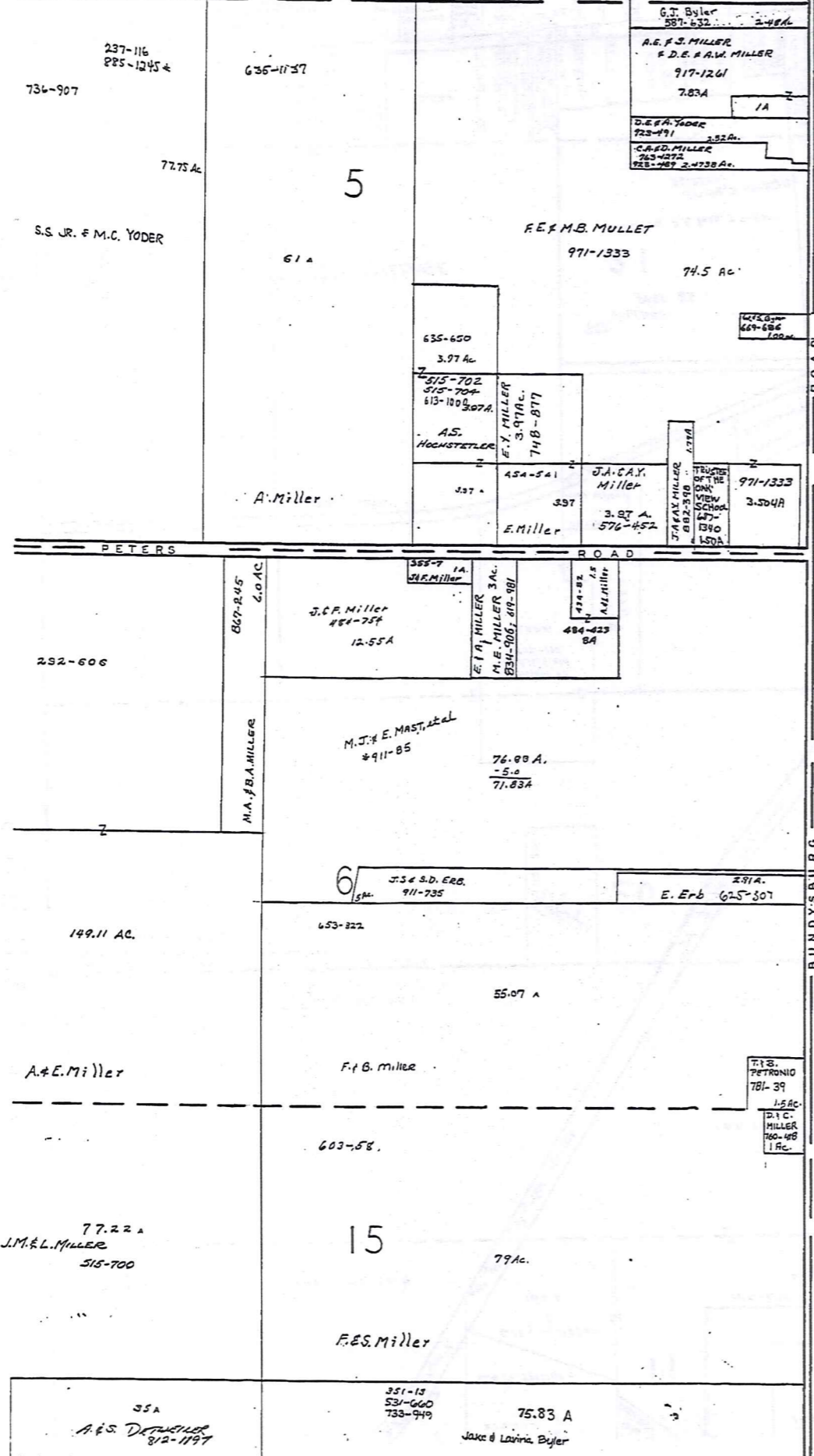
JANUARY 1, 1994  
RELATIVE REPRESENTATION

A	B	C	D
E	F	G	H
I	J	K	L
M	N	O	P

MIDDLEFIELD TWP.

\* Inadequate Description

HUNTSBURG TOWNSHIP



BUNDYSBURG ROAD  
TRUMBULL COUNTY

TRW-REDI SCALE IN 1/10 OF AN INCH 1-800-345-7334



SCALE 1" = 300'

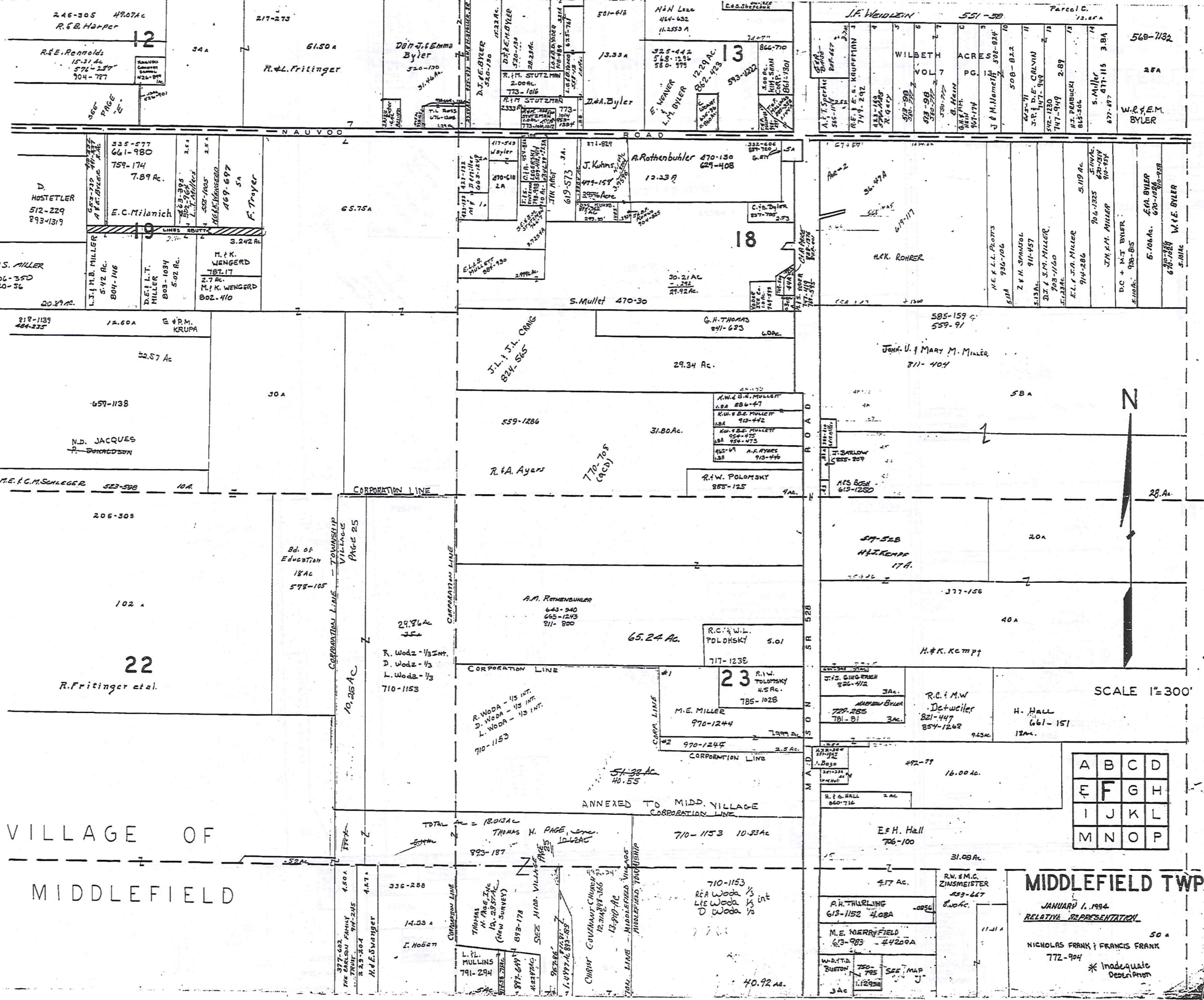
JANUARY 1, 1994  
RELATIVE REPRESENTATION

A	B	C	D
E	F	G	H
I	J	K	L
M	N	O	P

\* Inadequate Distribution

MIDDLEFIELD TWP.



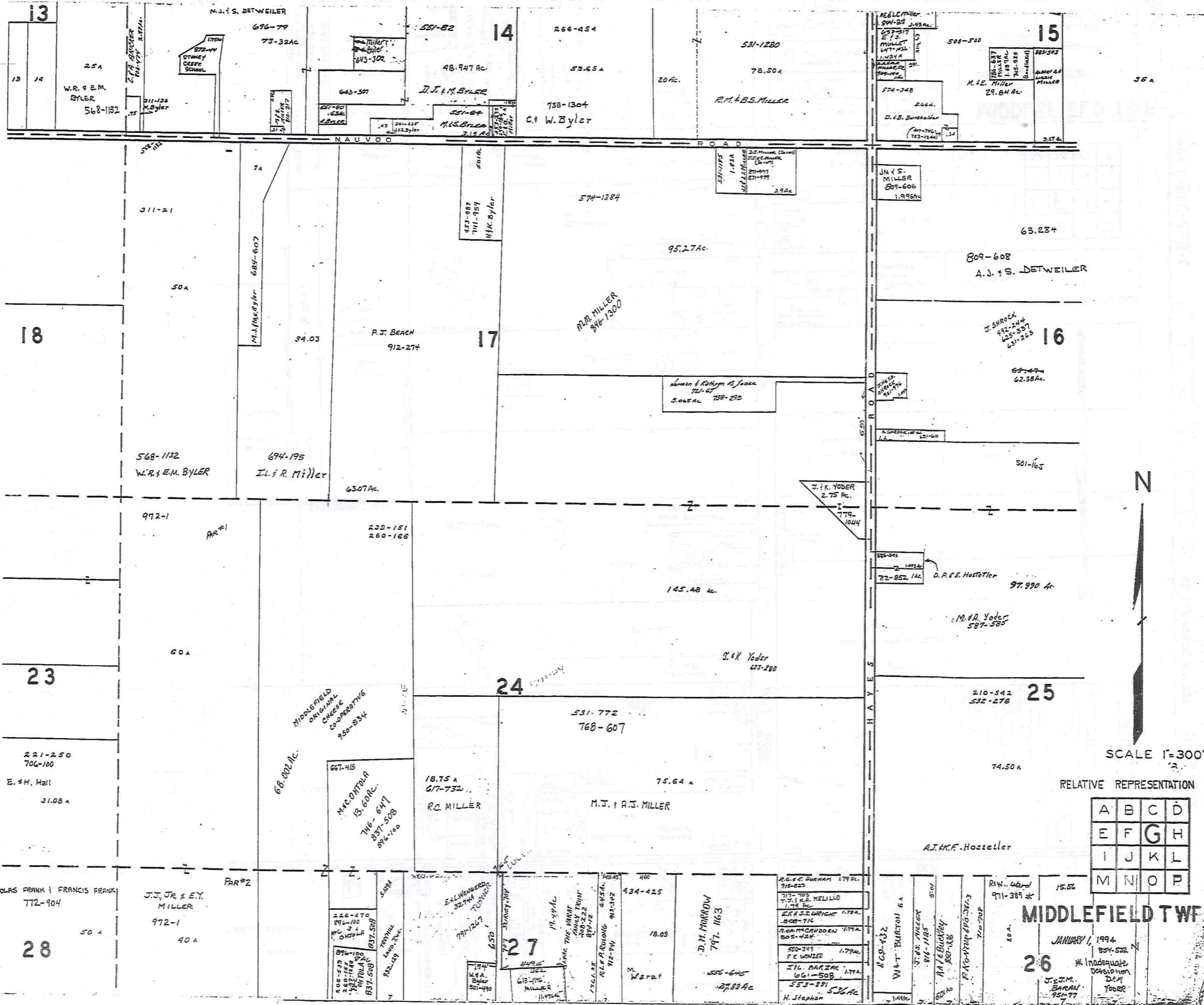


VILLAGE OF  
MIDDLEFIELD

MIDDLEFIELD TWP.

JANUARY 1, 1994  
RELATIVE REPRESENTATION  
NICHOLAS FRANK & FRANCIS FRANK  
772-904  
\* Inadequate  
Description

TRW-REDI SCALE IN 1/10 OF AN INCH 1-800-345-7334



**TRW-REDI**  
 SCALE IN 1/10 OF AN INCH  
 1-800-345-7334

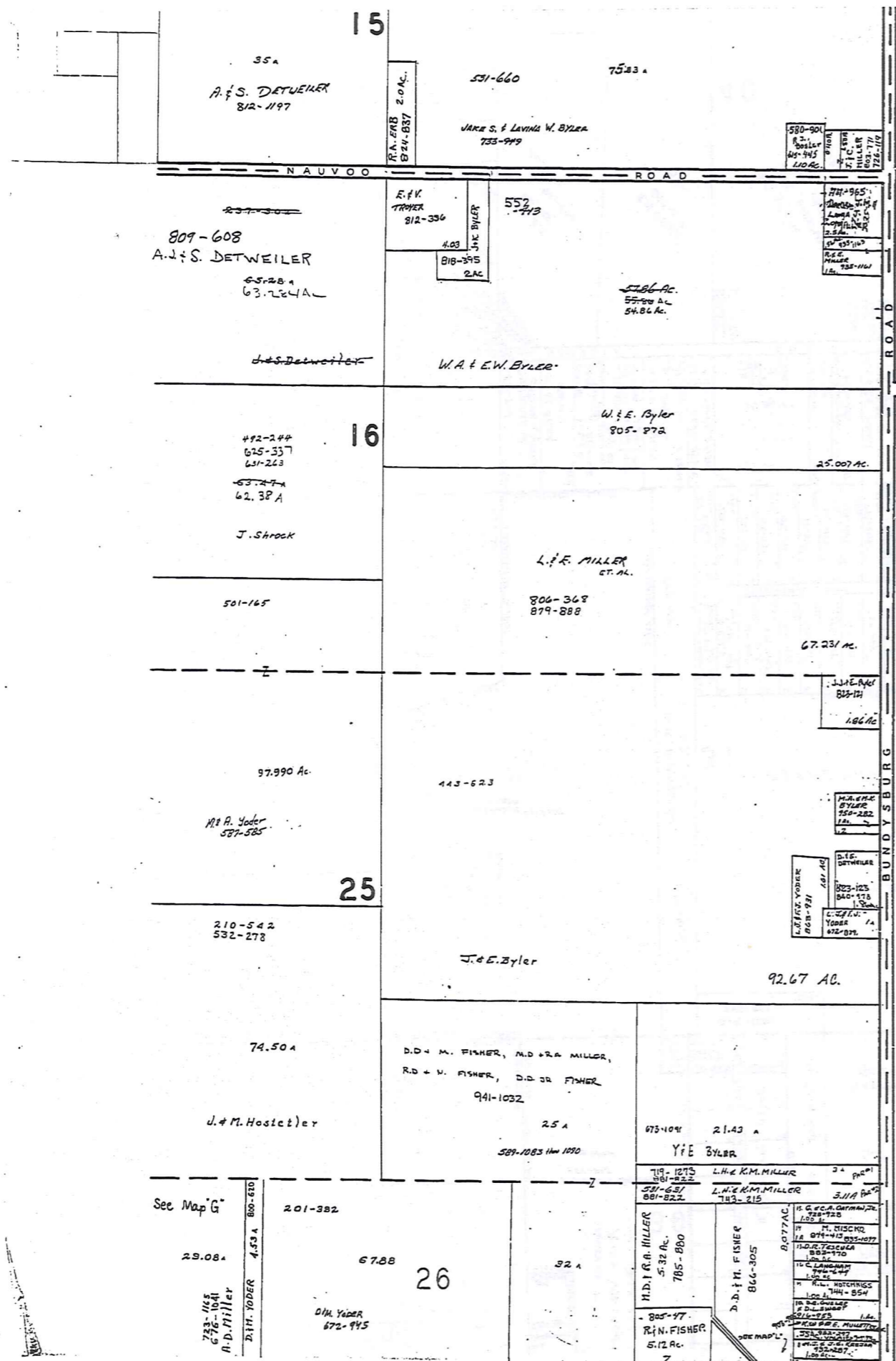


SCALE 1"=300'

RELATIVE REPRESENTATION

A	B	C	D
E	F	G	H
I	J	K	L
M	N	O	P

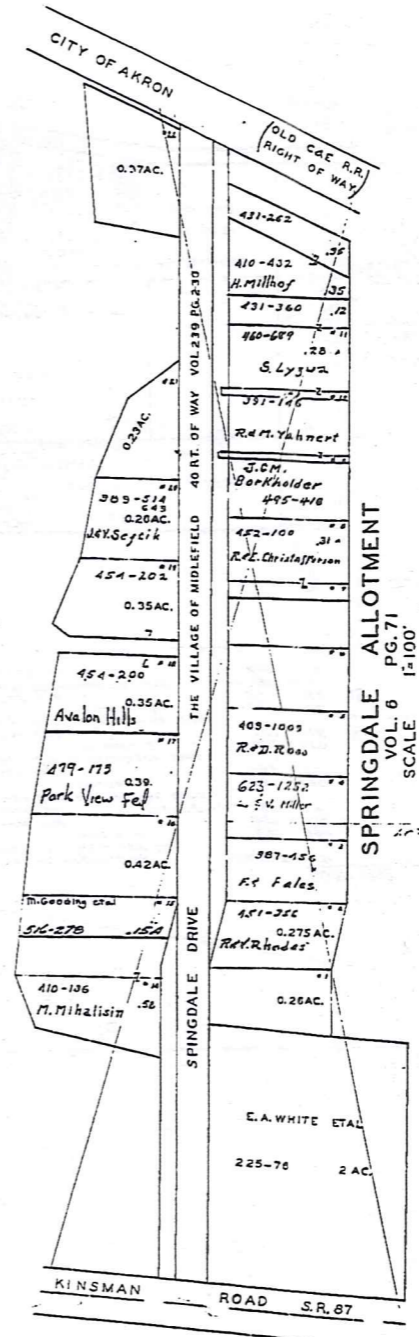
**MIDDLEFIELD TWP.**  
 JANUARY 1, 1994  
 26 \* Inadequate  
 D.M. Yoder  
 J.E.M. BARN  
 95-77



T R U M B U L L C O U N T Y

KINSMAN ROAD 87	
A	D
459-461	459-461
459-462	459-462
459-463	459-463
459-464	459-464
459-465	459-465
459-466	459-466
459-467	459-467
459-468	459-468
459-469	459-469
459-470	459-470
459-471	459-471
459-472	459-472
459-473	459-473
459-474	459-474
459-475	459-475
459-476	459-476
459-477	459-477
459-478	459-478
459-479	459-479
459-480	459-480
459-481	459-481
459-482	459-482
459-483	459-483
459-484	459-484
459-485	459-485
459-486	459-486
459-487	459-487
459-488	459-488
459-489	459-489
459-490	459-490
459-491	459-491
459-492	459-492
459-493	459-493
459-494	459-494
459-495	459-495
459-496	459-496
459-497	459-497
459-498	459-498
459-499	459-499
459-500	459-500

315-363 Agreement of Restriction  
 CRESTWOOD SUB. DIV.  
 VOL. 6 PG. 77  
 LOT 30  
 SCALE 1"=200'



SPRINGDALE ALLOTMENT  
 VOL. 6 PG. 71  
 SCALE 1"=100'  
 See page "p"



SCALE 1"=300'

\* Inadequate Description

JANUARY 1, 1996

A	B	C	D
E	F	G	H
I	J	K	L
M	N	O	P

MIDDLEFIELD TWP.  
 RELATIVE REPRESENTATION

TRW-REDI SCALE IN 1/10 OF AN INCH



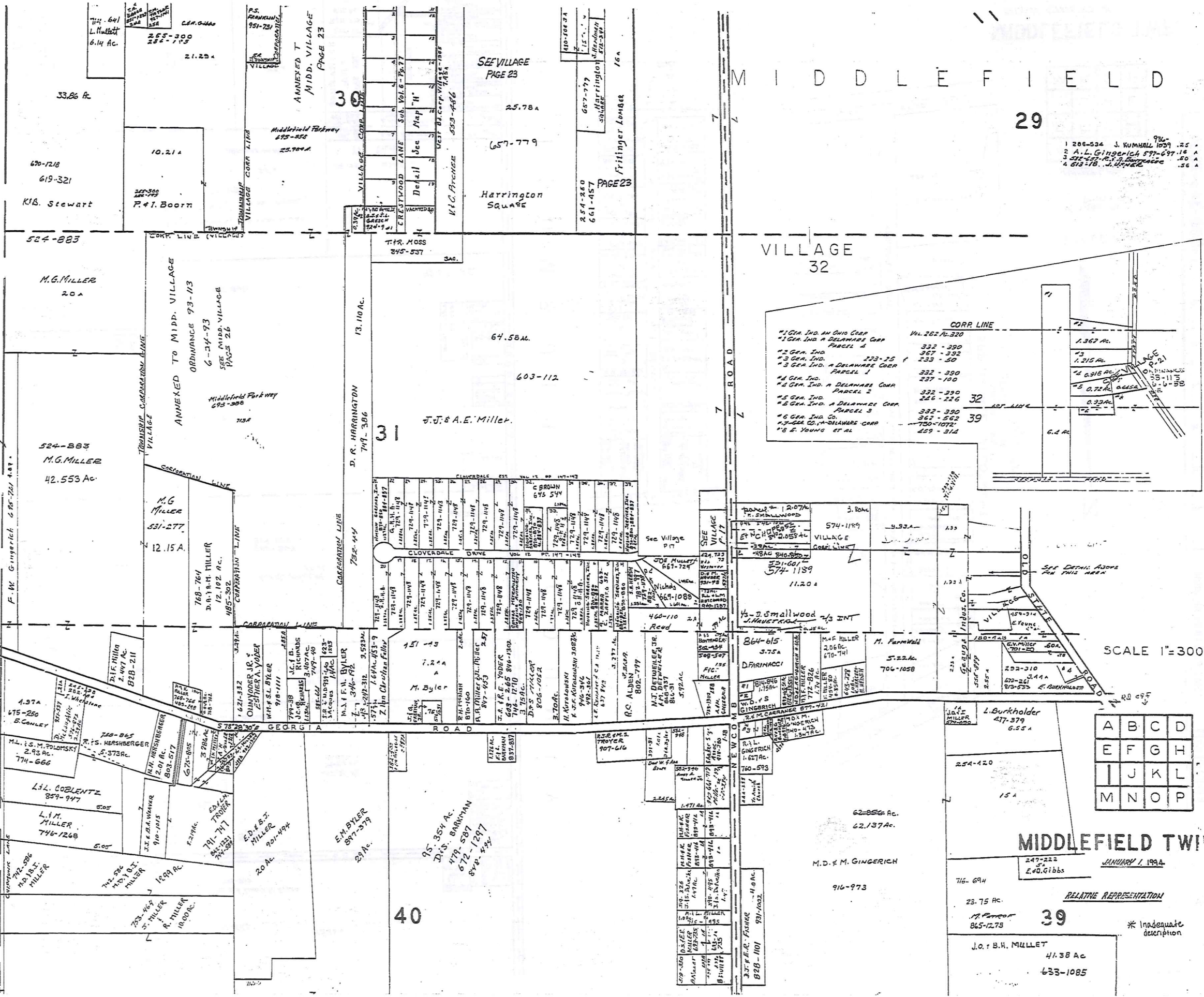
1-800-345-7334

BURTON TOWNSHIP

MIDDLEFIELD

29

- 1 206-534 J. KUMHALL 1039 .25 A
- 2 A.L. GINGERICH 577-697 16 A
- 3 577-697 R.L. GINGERICH 16 A
- 4 613-18 J. GINGERICH 16 A



TRW-REDI SCALE IN 1/10 OF AN INCH

1-800-345-7334

A	B	C	D
E	F	G	H
I	J	K	L
M	N	O	P

MIDDLEFIELD TWP

JANUARY 1, 1994

RELATIVE REPRESENTATION

\* Inadequate description

39

J.O. B.H. MULLET  
41.38 Ac  
633-1085

23.75 Ac  
M. Farrow  
865-1273

716-694

M.D. & M. GINGERICH

916-973

62,354 Ac.  
62,137 Ac.

L. Burkholder  
417-379  
655 A

254-420

15 A

1/2 S. Smallwood 2/3 INT  
Village  
11.20 A

864-615  
3.75 A  
D. FARMACCI

M.T. DETMERS JR.  
471-837  
863-337

R.C. ALBEN  
802-779

M.T. DETMERS JR.  
471-837  
863-337

716-1078  
156 AC  
MILLER

716-1078  
156 AC  
MILLER

716-1078  
156 AC  
MILLER

716-1078  
156 AC  
MILLER

716-1078  
156 AC  
MILLER

716-1078  
156 AC  
MILLER

716-1078  
156 AC  
MILLER

716-1078  
156 AC  
MILLER

716-1078  
156 AC  
MILLER

716-1078  
156 AC  
MILLER

SEE VILLAGE PAGE 23

25.78 A

657-779

HARRINGTON SQUARE  
661-457

THR. MOSS  
845-537

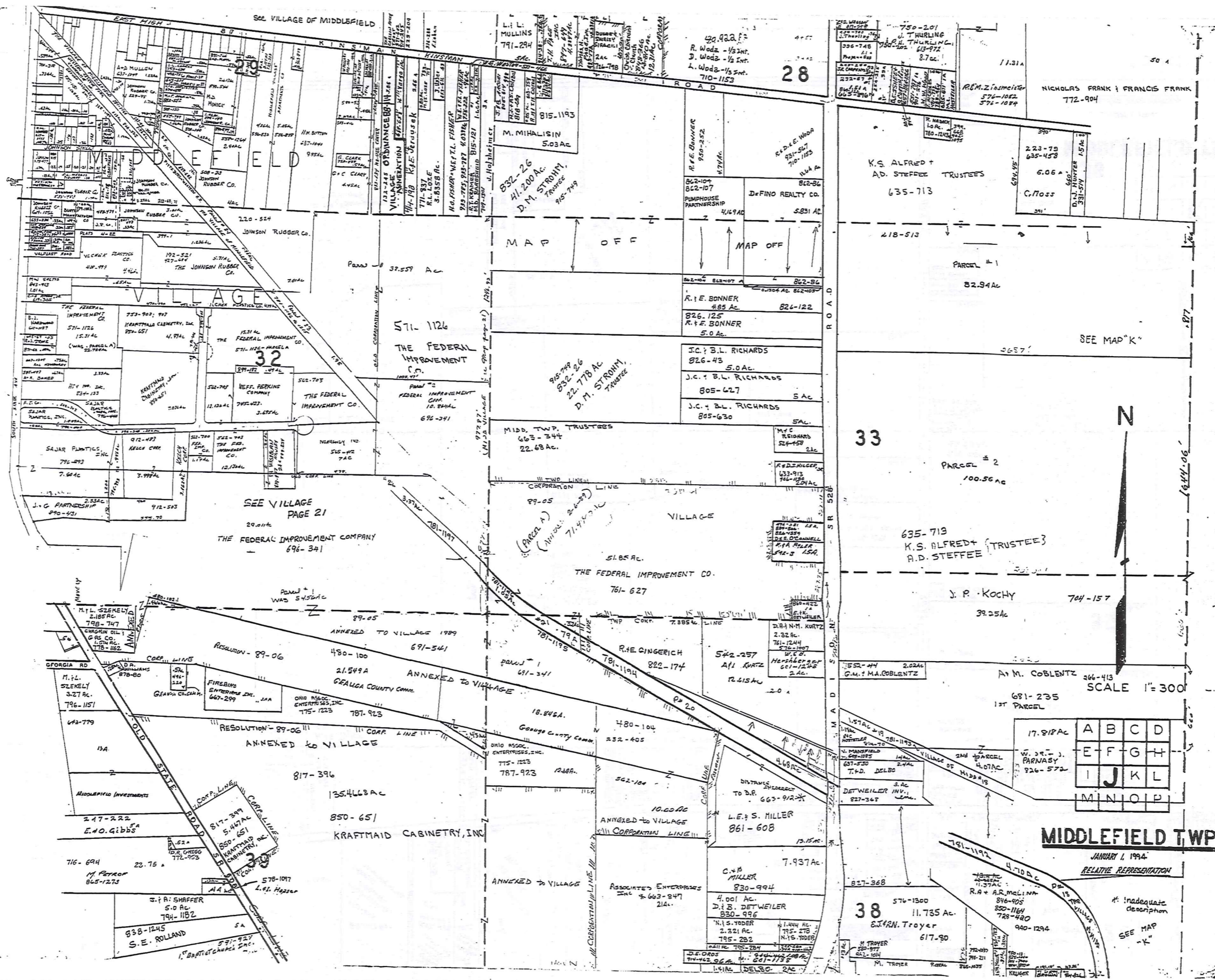
64.58 A.

603-112

J.J. & A.E. Miller.

749-386

729-1148	729-1149	729-1150	729-1151	729-1152	729-1153	729-1154	729-1155	729-1156	729-1157	729-1158	729-1159	729-1160	729-1161	729-1162	729-1163	729-1164	729-1165	729-1166	729-1167	729-1168	729-1169	729-1170	729-1171	729-1172	729-1173	729-1174	729-1175	729-1176	729-1177	729-1178	729-1179	729-1180	729-1181	729-1182	729-1183	729-1184	729-1185	729-1186	729-1187	729-1188	729-1189	729-1190	729-1191	729-1192	729-1193	729-1194	729-1195	729-1196	729-1197	729-1198	729-1199	729-1200	729-1201	729-1202	729-1203	729-1204	729-1205	729-1206	729-1207	729-1208	729-1209	729-1210	729-1211	729-1212	729-1213	729-1214	729-1215	729-1216	729-1217	729-1218	729-1219	729-1220	729-1221	729-1222	729-1223	729-1224	729-1225	729-1226	729-1227	729-1228	729-1229	729-1230	729-1231	729-1232	729-1233	729-1234	729-1235	729-1236	729-1237	729-1238	729-1239	729-1240	729-1241	729-1242	729-1243	729-1244	729-1245	729-1246	729-1247	729-1248	729-1249	729-1250	729-1251	729-1252	729-1253	729-1254	729-1255	729-1256	729-1257	729-1258	729-1259	729-1260	729-1261	729-1262	729-1263	729-1264	729-1265	729-1266	729-1267	729-1268	729-1269	729-1270	729-1271	729-1272	729-1273	729-1274	729-1275	729-1276	729-1277	729-1278	729-1279	729-1280	729-1281	729-1282	729-1283	729-1284	729-1285	729-1286	729-1287	729-1288	729-1289	729-1290	729-1291	729-1292	729-1293	729-1294	729-1295	729-1296	729-1297	729-1298	729-1299	729-1300	729-1301	729-1302	729-1303	729-1304	729-1305	729-1306	729-1307	729-1308	729-1309	729-1310	729-1311	729-1312	729-1313	729-1314	729-1315	729-1316	729-1317	729-1318	729-1319	729-1320	729-1321	729-1322	729-1323	729-1324	729-1325	729-1326	729-1327	729-1328	729-1329	729-1330	729-1331	729-1332	729-1333	729-1334	729-1335	729-1336	729-1337	729-1338	729-1339	729-1340	729-1341	729-1342	729-1343	729-1344	729-1345	729-1346	729-1347	729-1348	729-1349	729-1350	729-1351	729-1352	729-1353	729-1354	729-1355	729-1356	729-1357	729-1358	729-1359	729-1360	729-1361	729-1362	729-1363	729-1364	729-1365	729-1366	729-1367	729-1368	729-1369	729-1370	729-1371	729-1372	729-1373	729-1374	729-1375	729-1376	729-1377	729-1378	729-1379	729-1380	729-1381	729-1382	729-1383	729-1384	729-1385	729-1386	729-1387	729-1388	729-1389	729-1390	729-1391	729-1392	729-1393	729-1394	729-1395	729-1396	729-1397	729-1398	729-1399	729-1400	729-1401	729-1402	729-1403	729-1404	729-1405	729-1406	729-1407	729-1408	729-1409	729-1410	729-1411	729-1412	729-1413	729-1414	729-1415	729-1416	729-1417	729-1418	729-1419	729-1420	729-1421	729-1422	729-1423	729-1424	729-1425	729-1426	729-1427	729-1428	729-1429	729-1430	729-1431	729-1432	729-1433	729-1434	729-1435	729-1436	729-1437	729-1438	729-1439	729-1440	729-1441	729-1442	729-1443	729-1444	729-1445	729-1446	729-1447	729-1448	729-1449	729-1450	729-1451	729-1452	729-1453	729-1454	729-1455	729-1456	729-1457	729-1458	729-1459	729-1460	729-1461	729-1462	729-1463	729-1464	729-1465	729-1466	729-1467	729-1468	729-1469	729-1470	729-1471	729-1472	729-1473	729-1474	729-1475	729-1476	729-1477	729-1478	729-1479	729-1480	729-1481	729-1482	729-1483	729-1484	729-1485	729-1486	729-1487	729-1488	729-1489	729-1490	729-1491	729-1492	729-1493	729-1494	729-1495	729-1496	729-1497	729-1498	729-1499	729-1500	729-1501	729-1502	729-1503	729-1504	729-1505	729-1506	729-1507	729-1508	729-1509	729-1510	729-1511	729-1512	729-1513	729-1514	729-1515	729-1516	729-1517	729-1518	729-1519	729-1520	729-1521	729-1522	729-1523	729-1524	729-1525	729-1526	729-1527	729-1528	729-1529	729-1530	729-1531	729-1532	729-1533	729-1534	729-1535	729-1536	729-1537	729-1538	729-1539	729-1540	729-1541	729-1542	729-1543	729-1544	729-1545	729-1546	729-1547	729-1548	729-1549	729-1550	729-1551	729-1552	729-1553	729-1554	729-1555	729-1556	729-1557	729-1558	729-1559	729-1560	729-1561	729-1562	729-1563	729-1564	729-1565	729-1566	729-1567	729-1568	729-1569	729-1570	729-1571	729-1572	729-1573	729-1574	729-1575	729-1576	729-1577	729-1578	729-1579	729-1580	729-1581	729-1582	729-1583	729-1584	729-1585	729-1586	729-1587	729-1588	729-1589	729-1590	729-1591	729-1592	729-1593	729-1594	729-1595	729-1596	729-1597	729-1598	729-1599	729-1600	729-1601	729-1602	729-1603	729-1604	729-1605	729-1606	729-1607	729-1608	729-1609	729-1610	729-1611	729-1612	729-1613	729-1614	729-1615	729-1616	729-1617	729-1618	729-1619	729-1620	729-1621	729-1622	729-1623	729-1624	729-1625	729-1626	729-1627	729-1628	729-1629	729-1630	729-1631	729-1632	729-1633	729-1634	729-1635	729-1636	729-1637	729-1638	729-1639	729-1640	729-1641	729-1642	729-1643	729-1644	729-1645	729-1646	729-1647	729-1648	729-1649	729-1650	729-1651	729-1652	729-1653	729-1654	729-1655	729-1656	729-1657	729-1658	729-1659	729-1660	729-1661	729-1662	729-1663	729-1664	729-1665	729-1666	729-1667	729-1668	729-1669	729-1670	729-1671	729-1672	729-1673	729-1674	729-1675	729-1676	729-1677	729-1678	729-1679	729-1680	729-1681	729-1682	729-1683	729-1684	729-1685	729-1686	729-1687	729-1688	729-1689	729-1690	729-1691	729-1692	729-1693	729-1694	729-1695	729-1696	729-1697	729-1698	729-1699	729-1700	729-1701	729-1702	729-1703	729-1704	729-1705	729-1706	729-1707	729-1708	729-1709	729-1710	729-1711	729-1712	729-1713	729-1714	729-1715	729-1716	729-1717	729-1718	729-1719	729-1720	729-1721	729-1722	729-1723	729-1724	729-1725	729-1726	729-1727	729-1728	729-1729	729-1730	729-1731	729-1732	729-1733	729-1734	729-1735	729-1736	729-1737	729-1738	729-1739	729-1740	729-1741	729-1742	729-1743	729-1744	729-1745	729-1746	729-1747	729-1748	729-1749	729-1750	729-1751	729-1752	729-1753	729-1754	729-1755	729-1756	729-1757	729-1758	729-1759	729-1760	729-1761	729-1762	729-1763	729-1764	729-1765	729-1766	729-1767	729-1768	729-1769	729-1770	729-1771	729-1772	729-1773	729-1774	729-1775	729-1776	729-1777	729-1778	729-1779	729-1780	729-1781	729-1782	729-1783	729-1784	729-1785	729-1786	729-1787	729-1788	729-1789	729-1790	729-1791	729-1792	729-1793	729-1794	729-1795	729-1796	729-1797	729-1798	729-1799	729-1800	729-1801	729-1802	729-1803	729-1804	729-1805	729-1806	729-1807	729-1808	729-1809	729-1810	729-1811	729-1812	729-1813	729-1814	729-1815	729-1816	729-1817	729-1818	729-1819	729-1820	729-1821	729-1822	729-1823	729-1824	729-1825	729-1826	729-1827	729-1828	729-1829	729-1830	729-1831	729-1832	729-1833	729-1834	729-1835	729-1836	729-1837	729-1838	729-1839	729-1840	729-1841	729-1842	729-1843	729-1844	729-1845	729-1846	729-1847	729-1848	729-1849	729-1850	729-1851	729-1852	729-1853	729-1854	729-1855	729-1856	729-1857	729-1858	729-1859	729-1860	729-1861	729-1862	729-1863	729-1864	729-1865	729-1866	729-1867	729-1868	729-1869	729-1870	729-1871	729-1872	729-1873	729-1874	729-1875	729-1876	729-1877	729-1878	729-1879	729-1880	729-1881	729-1882	729-1883	729-1884	729-1885	729-1886	729-1887	729-1888	729-1889	729-1890	729-1891	729-1892	729-1893	729-1894	729-1895	729-1896	729-1897	729-1898	729-1899	729-1900	729-1901	729-1902	729-
----------	----------	----------	----------	----------	----------	----------	----------	----------	----------	----------	----------	----------	----------	----------	----------	----------	----------	----------	----------	----------	----------	----------	----------	----------	----------	----------	----------	----------	----------	----------	----------	----------	----------	----------	----------	----------	----------	----------	----------	----------	----------	----------	----------	----------	----------	----------	----------	----------	----------	----------	----------	----------	----------	----------	----------	----------	----------	----------	----------	----------	----------	----------	----------	----------	----------	----------	----------	----------	----------	----------	----------	----------	----------	----------	----------	----------	----------	----------	----------	----------	----------	----------	----------	----------	----------	----------	----------	----------	----------	----------	----------	----------	----------	----------	----------	----------	----------	----------	----------	----------	----------	----------	----------	----------	----------	----------	----------	----------	----------	----------	----------	----------	----------	----------	----------	----------	----------	----------	----------	----------	----------	----------	----------	----------	----------	----------	----------	----------	----------	----------	----------	----------	----------	----------	----------	----------	----------	----------	----------	----------	----------	----------	----------	----------	----------	----------	----------	----------	----------	----------	----------	----------	----------	----------	----------	----------	----------	----------	----------	----------	----------	----------	----------	----------	----------	----------	----------	----------	----------	----------	----------	----------	----------	----------	----------	----------	----------	----------	----------	----------	----------	----------	----------	----------	----------	----------	----------	----------	----------	----------	----------	----------	----------	----------	----------	----------	----------	----------	----------	----------	----------	----------	----------	----------	----------	----------	----------	----------	----------	----------	----------	----------	----------	----------	----------	----------	----------	----------	----------	----------	----------	----------	----------	----------	----------	----------	----------	----------	----------	----------	----------	----------	----------	----------	----------	----------	----------	----------	----------	----------	----------	----------	----------	----------	----------	----------	----------	----------	----------	----------	----------	----------	----------	----------	----------	----------	----------	----------	----------	----------	----------	----------	----------	----------	----------	----------	----------	----------	----------	----------	----------	----------	----------	----------	----------	----------	----------	----------	----------	----------	----------	----------	----------	----------	----------	----------	----------	----------	----------	----------	----------	----------	----------	----------	----------	----------	----------	----------	----------	----------	----------	----------	----------	----------	----------	----------	----------	----------	----------	----------	----------	----------	----------	----------	----------	----------	----------	----------	----------	----------	----------	----------	----------	----------	----------	----------	----------	----------	----------	----------	----------	----------	----------	----------	----------	----------	----------	----------	----------	----------	----------	----------	----------	----------	----------	----------	----------	----------	----------	----------	----------	----------	----------	----------	----------	----------	----------	----------	----------	----------	----------	----------	----------	----------	----------	----------	----------	----------	----------	----------	----------	----------	----------	----------	----------	----------	----------	----------	----------	----------	----------	----------	----------	----------	----------	----------	----------	----------	----------	----------	----------	----------	----------	----------	----------	----------	----------	----------	----------	----------	----------	----------	----------	----------	----------	----------	----------	----------	----------	----------	----------	----------	----------	----------	----------	----------	----------	----------	----------	----------	----------	----------	----------	----------	----------	----------	----------	----------	----------	----------	----------	----------	----------	----------	----------	----------	----------	----------	----------	----------	----------	----------	----------	----------	----------	----------	----------	----------	----------	----------	----------	----------	----------	----------	----------	----------	----------	----------	----------	----------	----------	----------	----------	----------	----------	----------	----------	----------	----------	----------	----------	----------	----------	----------	----------	----------	----------	----------	----------	----------	----------	----------	----------	----------	----------	----------	----------	----------	----------	----------	----------	----------	----------	----------	----------	----------	----------	----------	----------	----------	----------	----------	----------	----------	----------	----------	----------	----------	----------	----------	----------	----------	----------	----------	----------	----------	----------	----------	----------	----------	----------	----------	----------	----------	----------	----------	----------	----------	----------	----------	----------	----------	----------	----------	----------	----------	----------	----------	----------	----------	----------	----------	----------	----------	----------	----------	----------	----------	----------	----------	----------	----------	----------	----------	----------	----------	----------	----------	----------	----------	----------	----------	----------	----------	----------	----------	----------	----------	----------	----------	----------	----------	----------	----------	----------	----------	----------	----------	----------	----------	----------	----------	----------	----------	----------	----------	----------	----------	----------	----------	----------	----------	----------	----------	----------	----------	----------	----------	----------	----------	----------	----------	----------	----------	----------	----------	----------	----------	----------	----------	----------	----------	----------	----------	----------	----------	----------	----------	----------	----------	----------	----------	----------	----------	----------	----------	----------	----------	----------	----------	----------	----------	----------	----------	----------	----------	----------	----------	----------	----------	----------	----------	----------	----------	----------	----------	----------	----------	----------	----------	----------	----------	----------	----------	----------	----------	----------	----------	----------	----------	----------	----------	----------	----------	----------	----------	----------	----------	----------	----------	----------	----------	----------	----------	----------	----------	----------	----------	----------	----------	----------	----------	----------	----------	----------	----------	----------	----------	----------	----------	----------	----------	----------	----------	----------	----------	----------	----------	----------	----------	----------	----------	----------	----------	----------	----------	----------	----------	----------	----------	----------	----------	----------	----------	----------	----------	----------	----------	----------	----------	----------	----------	----------	----------	----------	----------	----------	----------	----------	----------	----------	----------	----------	----------	----------	----------	----------	----------	----------	----------	----------	----------	----------	----------	----------	----------	----------	----------	----------	----------	----------	----------	----------	----------	------



**TRW-REDI**  
 SCALE IN 1/10 OF AN INCH  
 1-800-345-7334

**MIDDLEFIELD TWP.**

JANUARY 1, 1994  
 RELATIVE REPRESENTATION

A	B	C	D
E	F	G	H
I	J	K	L
M	N	O	P

\* Inadequate description  
 SEE MAP "K"

28

50 Ac.

NICHOLAS FRANK & FRANCIS FRANK  
772-904

PAR #2

40 Ac.

J.J. JR & E.Y. MILLER  
972-1

68.002 Ac.  
950-834  
MIDDLEFIELD  
ORIGINAL  
CHESSE  
CO-OPERATIVE

27

E.L. NENGBROD  
837-508  
894-100  
5 Ac

501-490

W.A. Byler  
617A

617-732

R.C. MILLER  
535AC

11476AC

T.L. & J.E. MILLER  
613-1176

18.09 Ac.

M. Warat  
434-425

27.88 Ac.

D.M. Morrow  
556-645  
797-1163

27.88 Ac.

R.I. Boggs  
615-1173  
571-286

3 Ac.

W.M.B. Socha  
332-547

26

Ray Ward  
971-389 \*

J.F. BARAN  
951-77

26

D.M. YODER  
854-532

C.M. Moss  
635-458  
606AC

KINSMAN  
M.L. HOBSTLER  
357-498  
1.63 Ac.

16.22 Ac.  
G.B. OPHIZIMS  
543-180  
2.11 Ac.

380 AC.  
772-1171  
D. J. SHUPARTE

A.E. Byler  
637-312

D.D. J. & M.S. MILLER  
556-1233  
61.784 Ac.

J.A.B. KZMINSKI  
542-725

H. Howells, TRUSTEE  
371-565  
897-572

THE HOWELLS FAMILY  
TRUST 433-575

I.R. Buttari  
611-349

218-513  
82.74 Ac.

C.M. KENNEDY  
L.M. WILSON  
924-107L

1/5 INT.  
B.P. SHUMATE  
630-99  
1021-344

88.4 Ac.

34  
JOS SD  
MAYE MILLER  
427-384  
773-173  
949-807  
104.79 Ac.

D.D. MILLER  
808-265

793-1294  
E.H. M.D. KEMPF  
6363 Ac.

18.69 Ac.

35  
20 Ac.

D. Miller et al.  
239-254  
46.23 Ac.

K.S. Alfred  
A.D. Steffee  
(Trustees)  
653-713

P.W. & S.M.  
GELTCH  
934-752  
968-44-55

100.56 Ac.

104.79 Ac.

D.M. Miller  
647-928  
26.61 Ac.

S.N. Miller  
700-1147  
12.26 Ac.

5.3 Ac.

5.3 Ac.

700-1145

I.R. Buttari  
611-349

J.J. Kochy, Jr.  
704-157  
39.25 Ac.

681-235

31.58 Ac.

681-235  
266-413

700-1145

E.A. Miller  
512-1023 ; 810-908  
84.56 Ac.

35 Ac.

11.18 Ac.

D.L. Miller  
470-1006  
91.69 Ac.

17.818 Ac.  
W. Jr. & J. PARNABY  
826-572

681-235

11 Ac.

26.76 Ac.

26.76 Ac.

35 Ac.

35 Ac.

11.18 Ac.

11.18 Ac.

11.18 Ac.

W. J. Parnaby Jr.  
950-1166

681-235

11 Ac.

26.76 Ac.

26.76 Ac.

35 Ac.

35 Ac.

11.18 Ac.

11.18 Ac.

11.18 Ac.

W. J. Parnaby Jr.  
950-1166

681-235

11 Ac.

26.76 Ac.

26.76 Ac.

35 Ac.

35 Ac.

11.18 Ac.

11.18 Ac.

11.18 Ac.

W. J. Parnaby Jr.  
950-1166

681-235

11 Ac.

26.76 Ac.

26.76 Ac.

35 Ac.

35 Ac.

11.18 Ac.

11.18 Ac.

11.18 Ac.

TRW-REDI  
SCALE IN 1/10 OF AN INCH

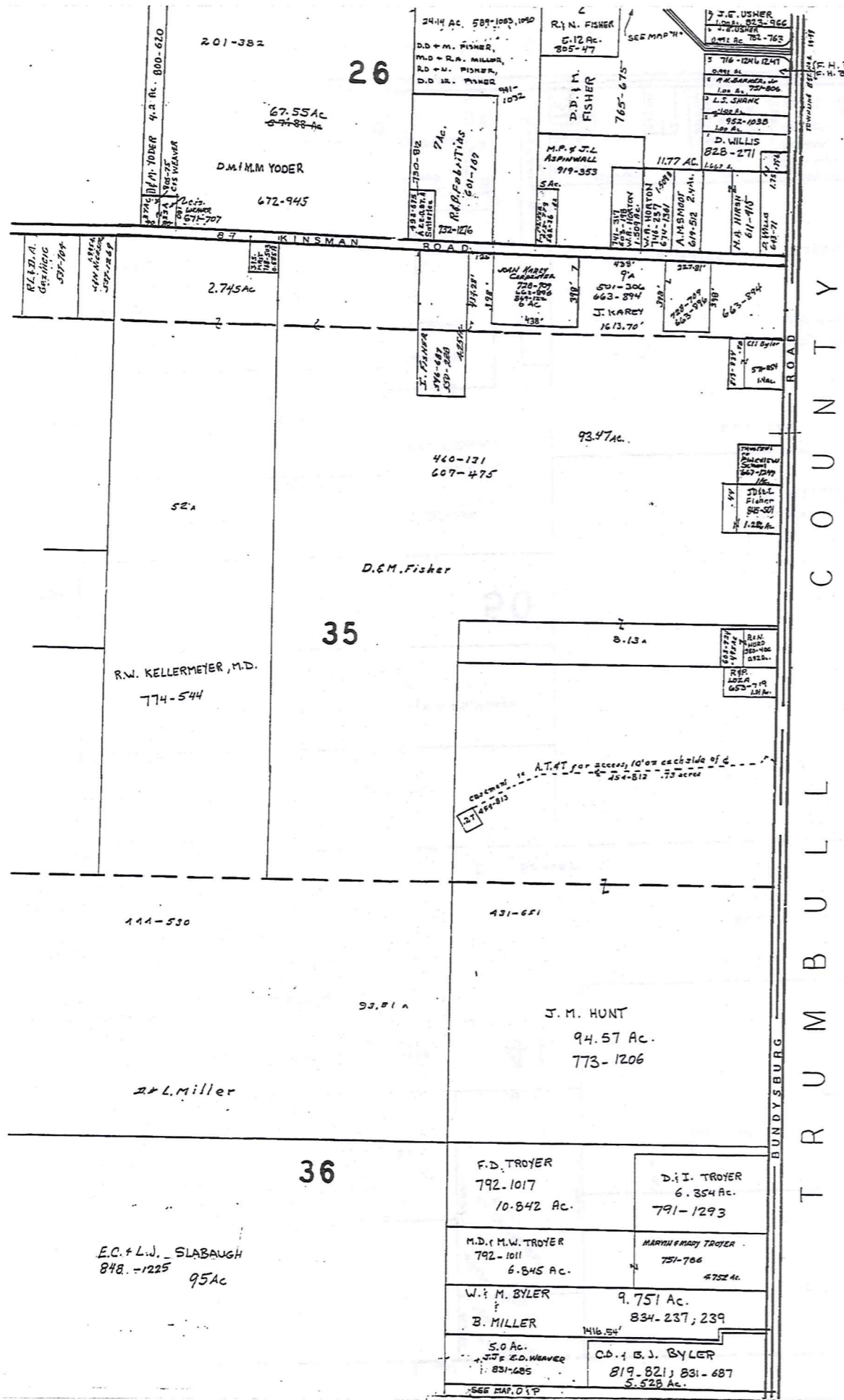
1-800-345-7334

A	B	C	D
E	F	G	H
I	J	K	L
M	N	O	P

36  
MIDDLEFIELD TWP.

JANUARY 1, 1994  
RELATIVE REPRESENTATION

\* Inadequate description



T R U M B U L L C O U N T Y B U N D Y S B U R G R O A D

TRW-REDI SCALE IN 1/10 OF AN INCH 1-800-345-7334



SCALE 1"=300'

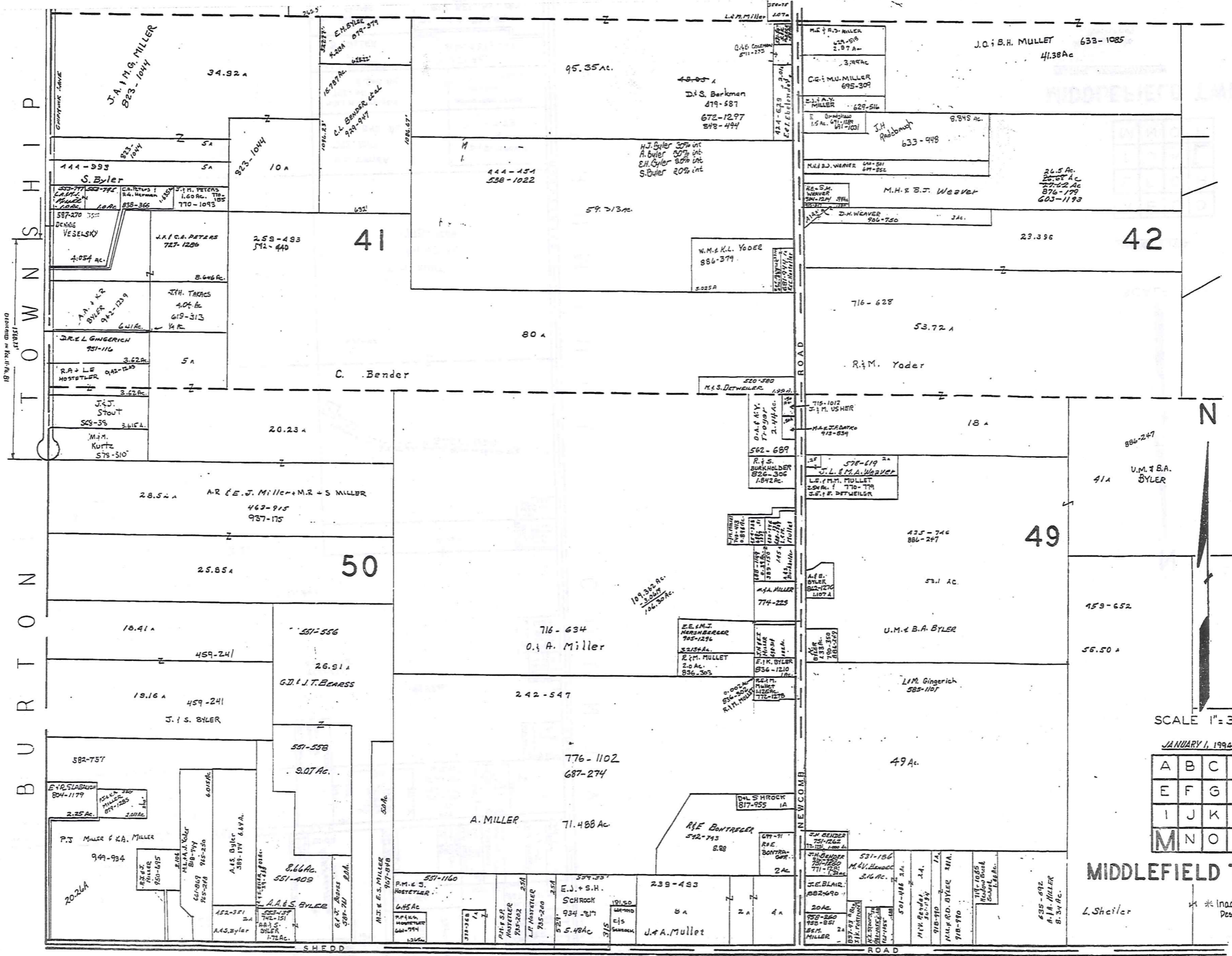
JANUARY 1, 1994

A	B	C	D
E	F	G	H
I	J	K	L
M	N	O	P

**MIDDLEFIELD TWP.**

RELATIVE REPRESENTATION

\* Inadequate Description



T O W N S H I P

B U R T O N

P A R K M A N T O W N S H I P

TRW/REDI SCALE IN 1/10 OF AN INCH

1-800-345-7334



SCALE 1" = 300'

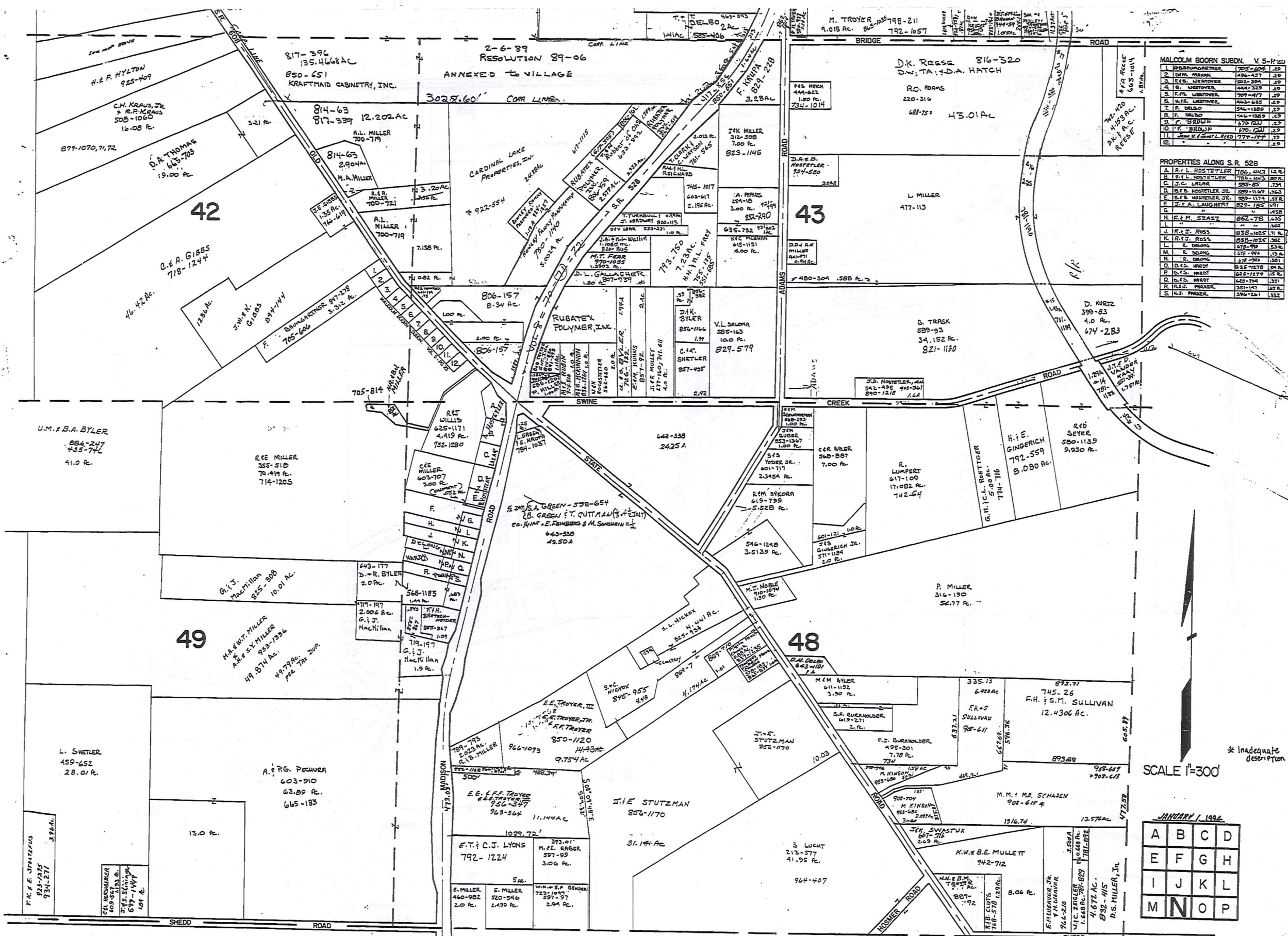
JANUARY 1, 1994

A	B	C	D
E	F	G	H
I	J	K	L
M	N	O	P

MIDDLEFIELD TWP.

L. Sheiler \* Inadequate Description

RELATIVE REPRESENTATION



MALCOLM BOORN SUBDN. V. 5-1-24

1	EDWARD BOORN	755-624	2.9
2	EDWARD BOORN	186-437	2.9
3	EDWARD BOORN	525-324	2.9
4	EDWARD BOORN	665-329	2.9
5	EDWARD BOORN	709-417	2.9
6	EDWARD BOORN	443-635	2.9
7	EDWARD BOORN	546-188	2.9
8	EDWARD BOORN	546-188	2.9
9	EDWARD BOORN	575-221	2.9
10	EDWARD BOORN	670-231	2.9
11	EDWARD BOORN	774-187	2.9
12	EDWARD BOORN	-	2.9

PROPERTIES ALONG S.R. 528

A	A. L. HOSTETLER	785-443	12.8
B	A. L. HOSTETLER	785-443	12.8
C	A. L. HOSTETLER	585-65	12.8
D	A. L. HOSTETLER	399-115	12.8
E	A. L. HOSTETLER	399-115	12.8
F	A. L. HOSTETLER	399-115	12.8
G	A. L. HOSTETLER	399-115	12.8
H	A. L. HOSTETLER	399-115	12.8
I	A. L. HOSTETLER	399-115	12.8
J	A. L. HOSTETLER	399-115	12.8
K	A. L. HOSTETLER	399-115	12.8
L	A. L. HOSTETLER	399-115	12.8
M	A. L. HOSTETLER	399-115	12.8
N	A. L. HOSTETLER	399-115	12.8
O	A. L. HOSTETLER	399-115	12.8
P	A. L. HOSTETLER	399-115	12.8
Q	A. L. HOSTETLER	399-115	12.8
R	A. L. HOSTETLER	399-115	12.8
S	A. L. HOSTETLER	399-115	12.8

TRW-REDI  
SCALE IN 1/10 OF AN INCH



1-800-345-7334

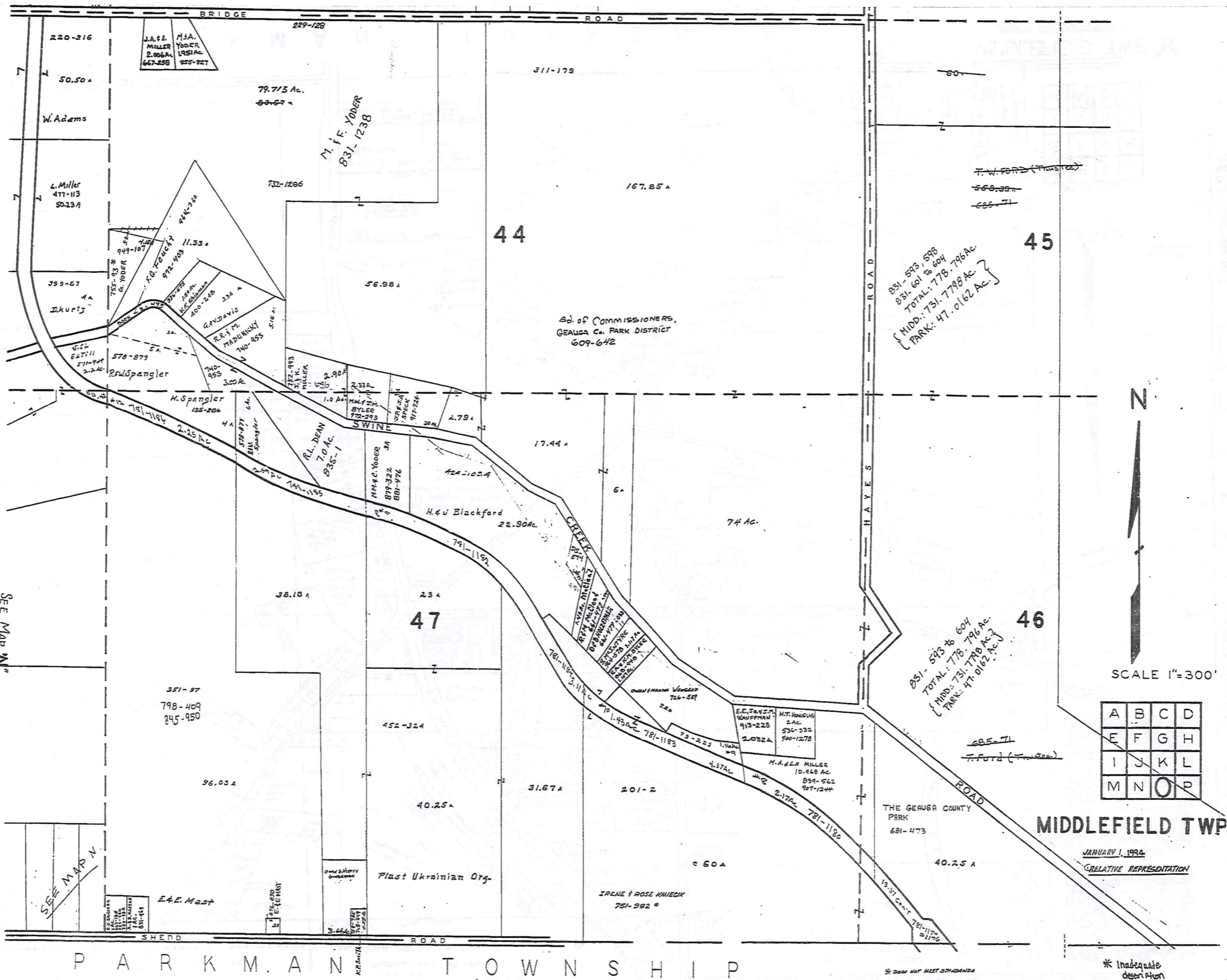
SCALE 1"=300'

JANUARY 1, 1996

A	B	C	D
E	F	G	H
I	J	K	L
M	N	O	P

P A R K M A N T O W N S H I P

MIDDLEFIELD TWP. "N"  
RELATIVE REPRESENTATION



**TRW-REDI**  
 SCALE IN 1/10 OF AN INCH  
 1-800-345-7334



SCALE 1"=300'

A	B	C	D
E	F	G	H
I	J	K	L
M	N	O	P

**MIDDLEFIELD TWP.**  
 JANUARY 1, 1994  
 RELATIVE REPRESENTATION

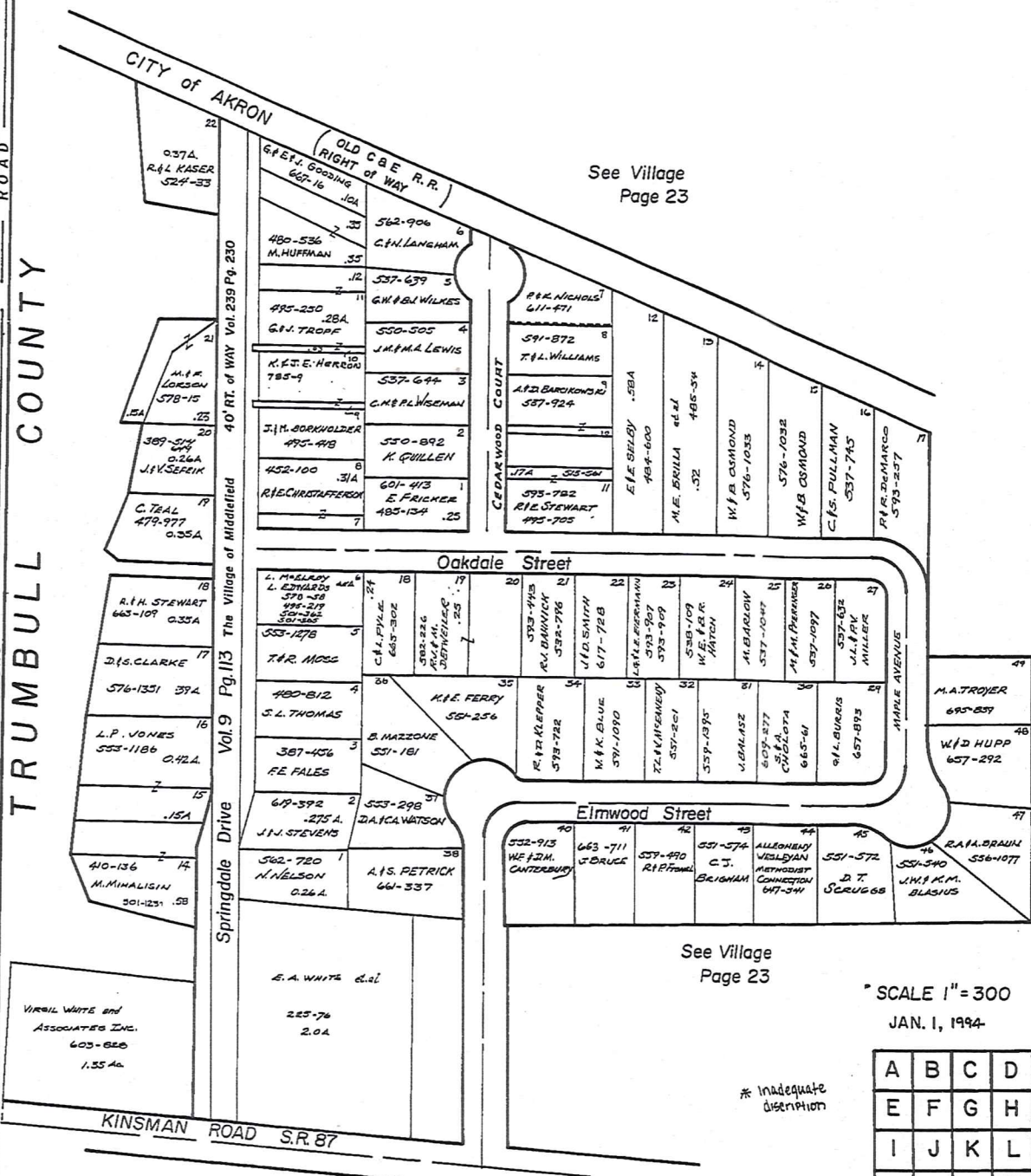
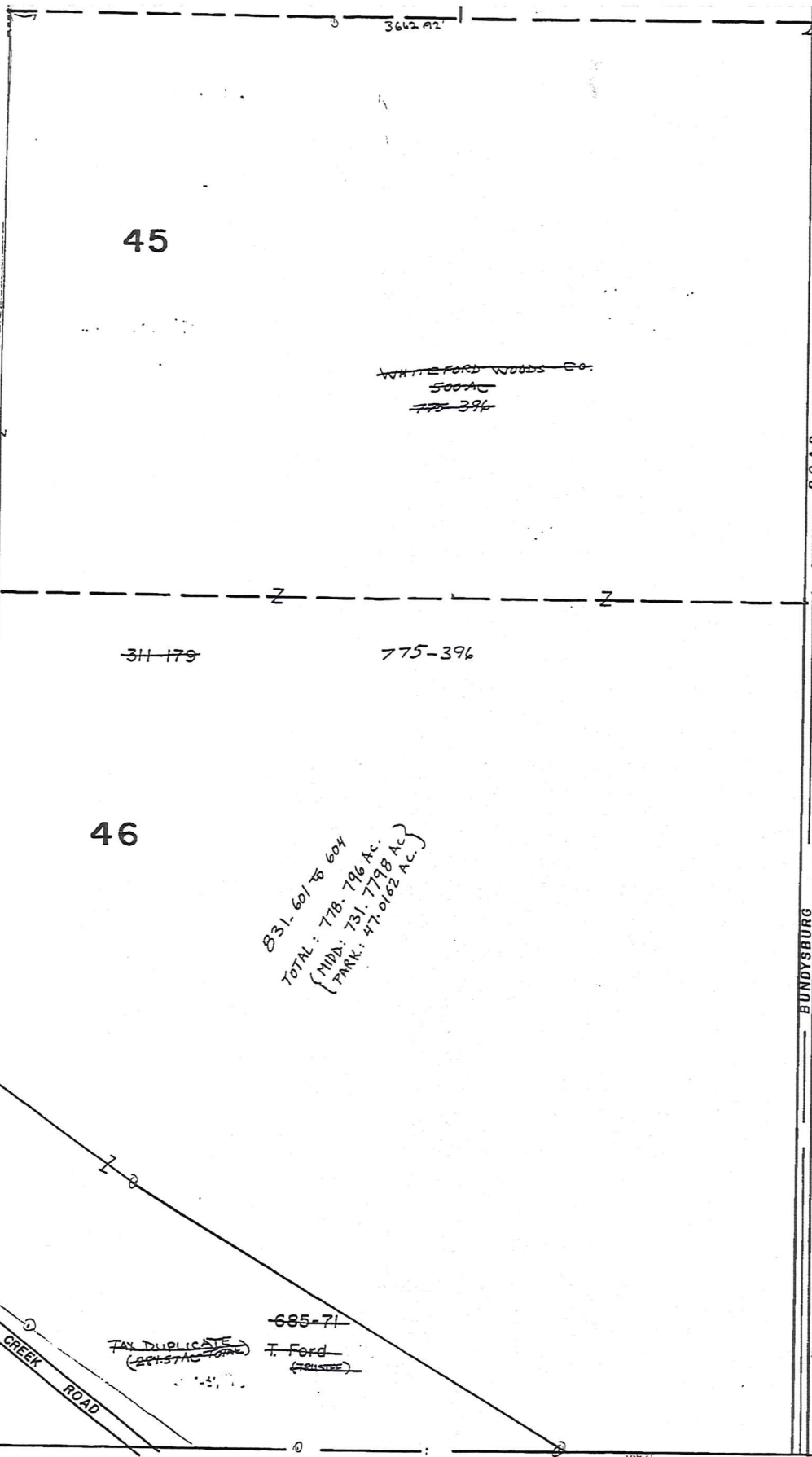
SEE MAP N

SEE MAP N

P A R K M A N T O W N S H I P

\* Does NOT MEET STANDARDS

\* Inadequate description



**TRW-REDI**  
 SCALE IN 1/10 OF AN INCH  
 1-800-345-7334

SCALE 1" = 300  
 JAN. 1, 1994

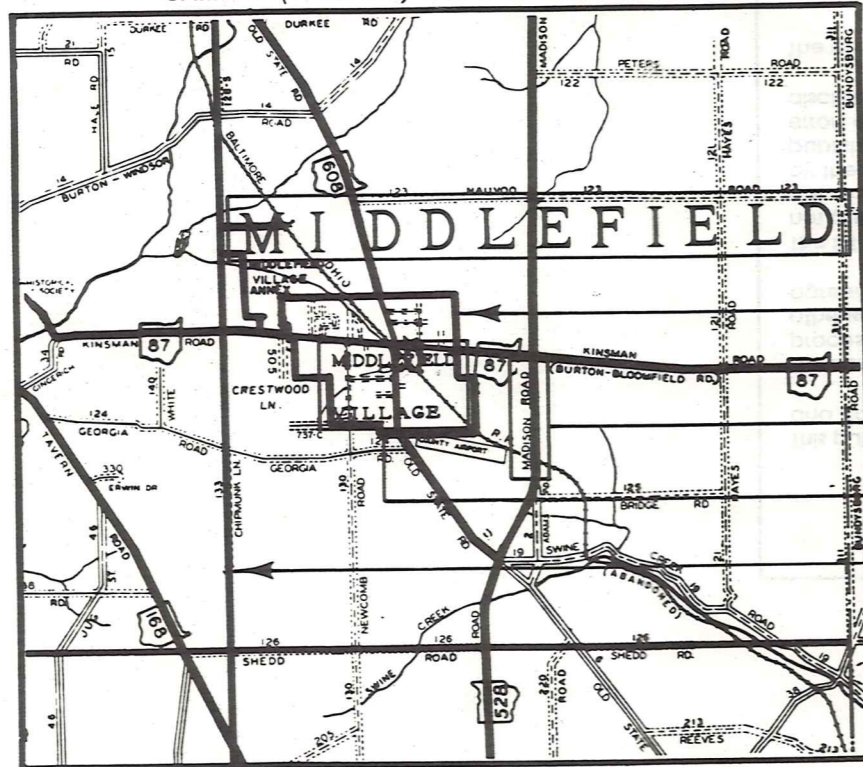
A	B	C	D
E	F	G	H
I	J	K	L
M	N	O	P

MIDDLEFIELD TWP.  
 RELATIVE REPRESENTATION

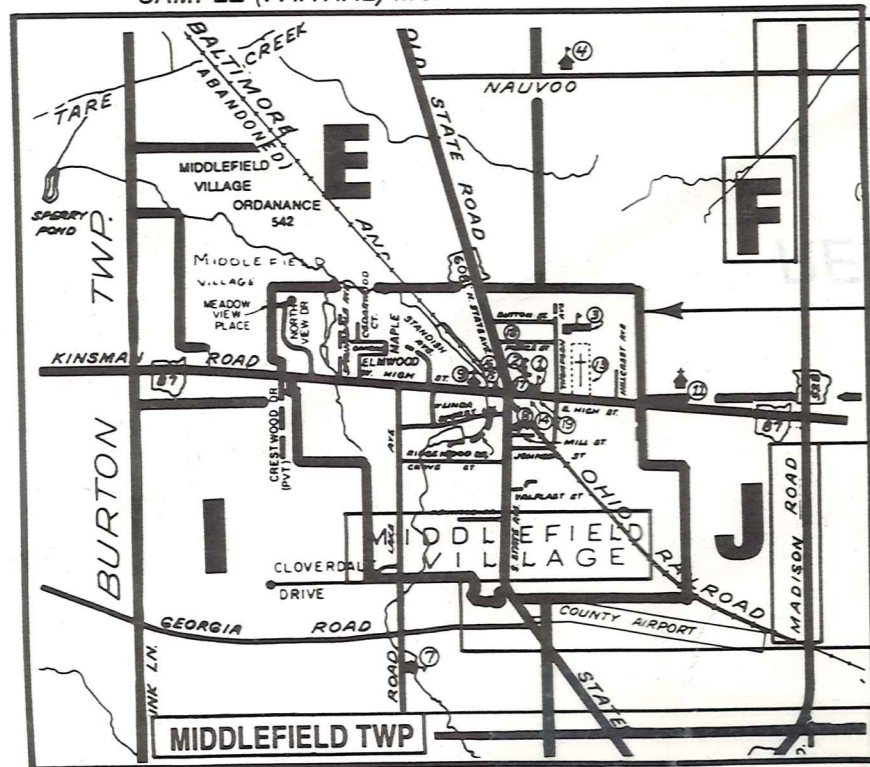
# Explanation and Use Sheet for Geauga County, Ohio

A

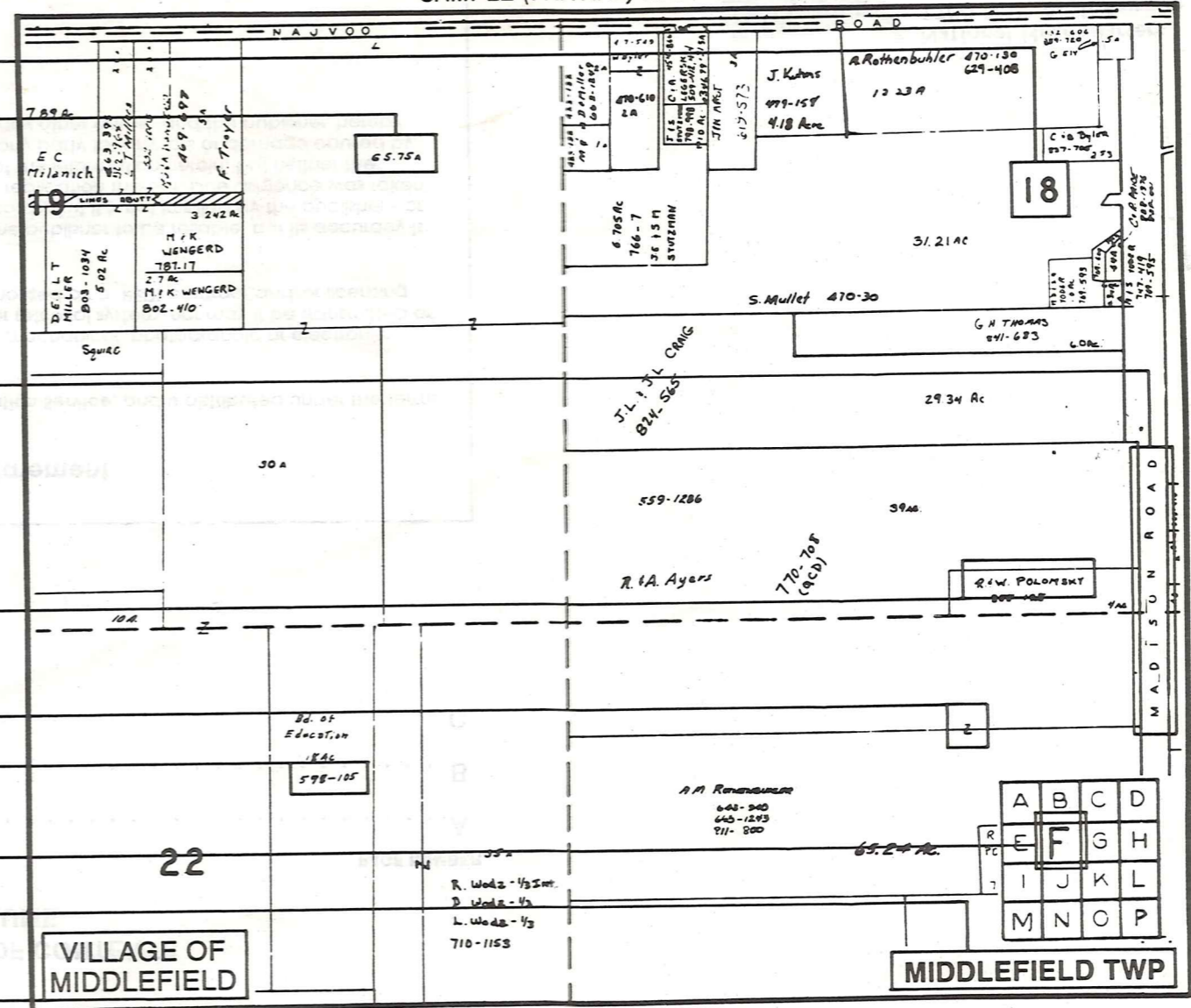
SAMPLE (PARTIAL) COUNTY INDEX MAP



SAMPLE (PARTIAL) MUNICIPALITY INDEX MAP



SAMPLE (PARTIAL) MAP PAGE



- Tract Lot Number
- Acreage
- Township Name
- Village Boundary
- Street Name
- Village Name
- Township Boundary
- Owners Name
- Denotes Continuous Ownership
- Deed Book & Page
- Map Page Number
- Township Name
- Village Name

- Village Boundary
- Street Name
- Village Name
- Township Name

### USE OF THE MAP VOLUME

1. LOCATE THE GENERAL AREA OF INTEREST ON THE COUNTY INDEX MAP AND NOTE THE MUNICIPALITY NAME (TOWNSHIP OR VILLAGE).
  2. REFER TO THE TABLE OF CONTENTS AND NOTE THE BEGINNING ATLAS PAGE NUMBER FOR THE MUNICIPALITY OF INTEREST.
  3. TURN TO THE PAGE INDICATED, ON THIS PAGE WILL APPEAR AN INDEX MAP FOR THAT MUNICIPALITY.
  4. LOCATE THE GENERAL AREA OF INTEREST AND NOTE THE MAP PAGE NUMBER. THIS MAY BE EITHER A LETTER OR A NUMBER.
  5. MAP PAGES ARE IN ALPHABETICAL (OR NUMERICAL) SEQUENCE FOLLOWING THE MUNICIPALITY INDEX MAP. FOLLOW SEQUENCE TO THE MAP PAGE INDICATED.
  6. LOCATE SPECIFIC PARCEL OF INTEREST AND NOTE THE DESIRED INFORMATION.
- NOTE: ON SOME MAPS YOU MAY BE REFERRED TO A DETAIL SHEET SHOWING AN ENLARGEMENT OF THE AREA. THESE MAPS ARE FOUND AT THE END OF THE REGULAR MAP PAGES IN EACH MUNICIPALITY IN EITHER ALPHABETICAL OR NUMERICAL SEQUENCE.
- NOTE: CHARDON VILLAGE HAS TITLE SHEETS. TO LOCATE OWNERS NAME, NOTE THE PARCEL NUMBER, REFER TO THE TITLE PAGE FOLLOWING THE MAP OF INTEREST, FOLLOW NUMERICAL SEQUENCE TO THE PARCEL NUMBER OF INTEREST AND NOTE THE DESIRED INFORMATION. IN ALL OTHER MUNICIPALITIES THE OWNERS NAME APPEARS ON THE MAP PAGE.